

1 2 3 4 5 6

A

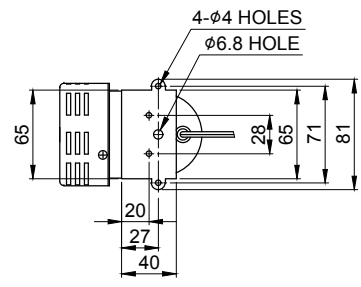
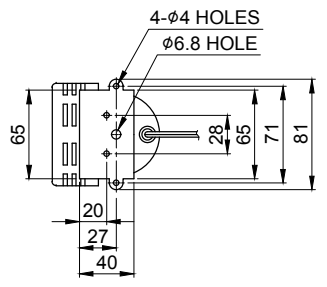
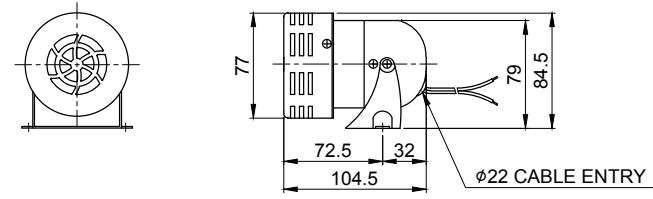
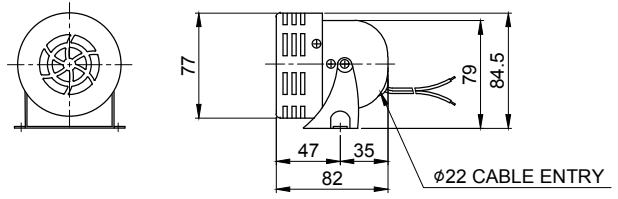
A

MARK	DATE	REVISION	REVISER	APP. BY
▲				
▲				

MODEL NO	SM30			
MATERIAL	HOUSING-STEEL			
USE VOLT.	CURRENT	DC12V	3.222A	
		DC24V	1.779A	
		AC110V	1.333A	
		AC220V	1.000A	
VOLUME	MAX. 110dB			
PROTECTION GRADE	WATER & DUST PROOF IP44			
CABLE ENTRY	φ22 LEAD HOLE			
COLOR OF HOUSING	RED			
RATING	10 MIN.			

B

B



SM30-DC12V/ 24V

SM30-AC110V/ 220V

C

C

	ISO2768-1 : CLASS OF TOLERANCE					SURFACE FINISH
	f	m	Ⓢ	v		
FOR LINEAR DIMENSIONS	0.5~3	±0.05	±0.1	±0.2	-	
	3~6			±0.3	±0.5	
	6~30	±0.1	±0.2	±0.5	±1	
	30~120	±0.15	±0.3	±0.8	±1.5	
	120~400	±0.2	±0.5	±1.2	±2.5	
400~1000	±0.3	±0.8	±2	±4		
FOR ANGULAR DIMENSIONS	0~10	±1°		±1°30'	±3°	
	10~50	±0°30'		±1°	±2°	
	50~120	±0°20'		±0°30'	±1°	
	120~400	±0°10'		±0°13'	±0°30'	

Nr.	DWG. NO.	TITLE/ NAME		MAT'L	QTY	REFERENCE
DSND BY	CHKD BY	CHKD BY	APRV BY	VIEW	DATE	
S.H.KIM	J.H.PARK		J.K.HAN	3	2019.03.20	
TITLE			MODEL			
SM30 OUTLINE DRAWING			SM30			
			DWG. NO.	SM30_OUT		
			SCALE	SIZE	REV	SHEET
N/S	A4	00	1/1			

D

D

1 2 3 4 5 6

A4(297X210)