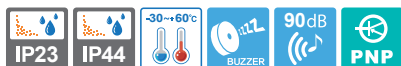


QT56MCL

LED Steady Tower Lights



Signal light that can be configured with 7 colors in 1 tower light

QT56MCL LED Steady

QT56MCL-BZ Built-in Buzzer LED Steady



QT56MCL series

Built-in buzzer output holes formed on the housing of the product.



QT56MCL Multiple Color LED Steady

- Helps reduce the costs of installation by reducing the space needed to emit seven color signals in a single warning light
- Elegant design with hexagon shaped metal housing
- Aluminum housing provides excellent durability
- Soft LED illuminates designated colors when on
- When off, milky translucent color lens provides a comfortable and stable viewing condition for workers in close proximity
- Folding type mount bracket can be utilized in various environments
- Built-in buzzer available (Volume : Max 90dB at 1m)
- Materials : Lens-PC, Housing-AI, Mounting bracket-AI
- Ambient operating temperature : -30°C to +60°C
- Protection rating : Standard type-IP44, Built-in Buzzer type-IP23

Model number	Voltage	Current	Certificates	Weight	Color
QT56MCL Steady	DC24V	Max 0.08A	-	0.45kg	7 Colors
QT56MCL-BZ Steady /w built-in buzzer			CE	0.48kg	

Signal/ Audible line current(Per each layer)

Voltage	DC24V
Signal line current	0.060A
Audible line current	0.020A

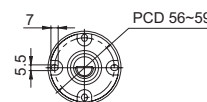
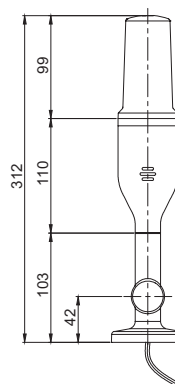
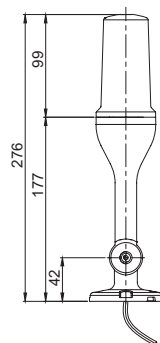


Technical Diagram

(Units : mm)

QT56MCL

QT56MCL-BZ



Wiring Instructions

- External signal line standard : Signal line 4P(R,G,B,K) threading, signal line standard UL1007 AWG22(0.3sq) 400mm
- Please refer to Wiring Instructions diagram to properly configure color options

※ Please refer to page 281 for detailed wiring instructions.



Ordering Specification

QT56MCL	-	24
[Model number]		[Voltage]
<ul style="list-style-type: none"> • QT56MCL • QT56MCL-BZ 		• 24-DC24V

QT56MCL

LED Steady Tower Lights

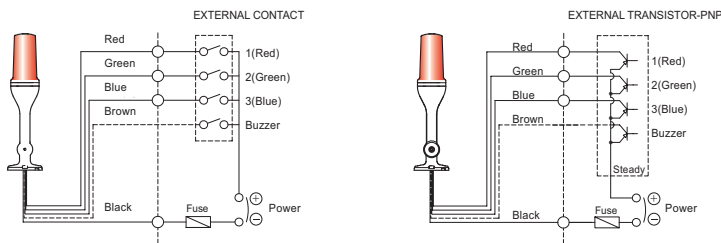


Wiring Instructions

- QT56MCL can be wired by using both external contact and transistor.
- When wiring with transistor, please make sure to use PNP transistor and follow the wiring instructions in the diagram below.



QT56MCL



< Wiring Configuration for Signal Color >

No.	Signal color	Wiring configuration
1	RED	1(RED)
2	GREEN	2(GREEN)
3	BLUE	3(BLUE)
4	AMBER	1(RED)+2(GREEN)
5	CYAN	2(GREEN)+3(BLUE)
6	PURPLE	1(RED)+3(BLUE)
7	WHITE	1(RED)+2(GREEN)+3(BLUE)

- External signal line standard : Signal line 4P(R,G,B,K) threading, signal line standard UL1007 AWG22(0.3sq) 400mm

Signal Color Options



- 7 Color modes available via wiring

You can configure seven color signals by combining the 4 signal wires (red, green, blue, black) attached to the tower light.



Warning/
Signal/
Stackable



Signal &
Electric Horn/
Speakers



Vessels and
Heavy-Duty
Equipment



Explosion
Proof



Warning
Light Bar



Aviation
Obstruction
Lights



Signal Tower
Lights



USB/ETN
Signal Tower
Lights



Wireless
Network
System



Electric Horn/
Speakers



Industrial
LED Lights